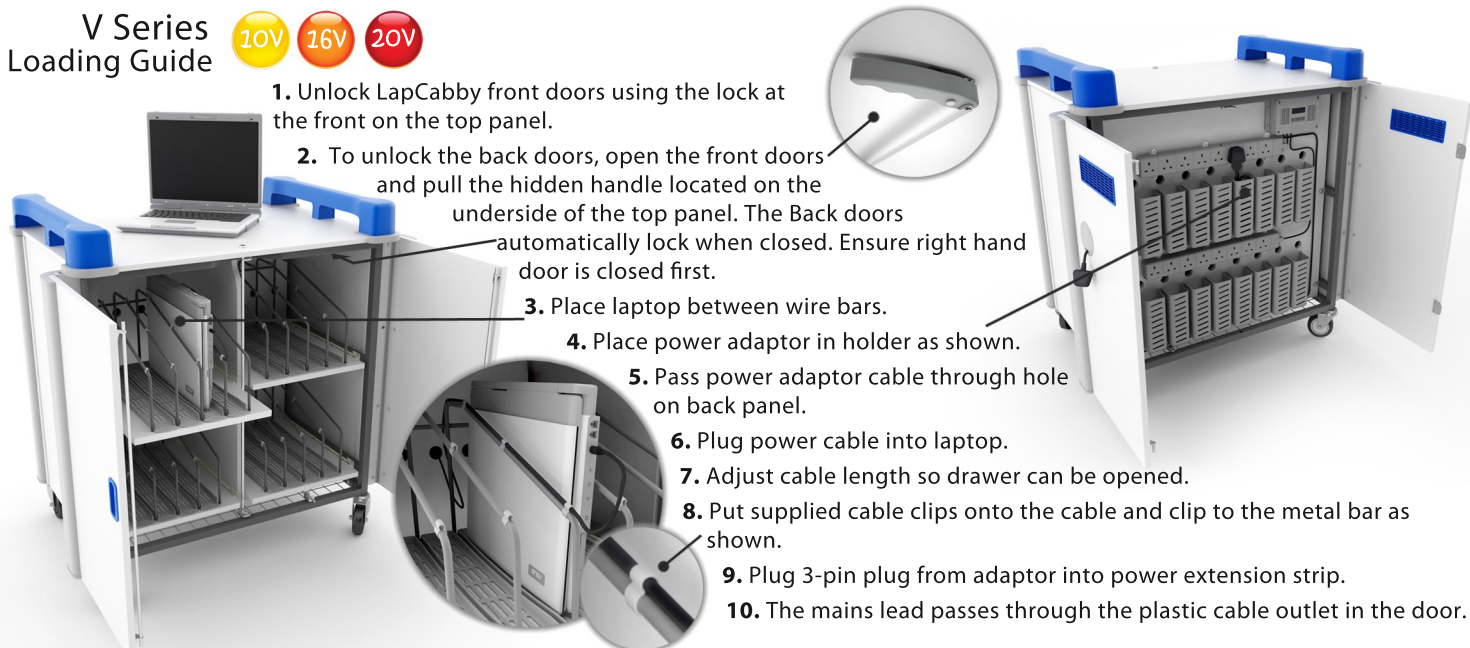


V Series Loading Guide

10V 16V 20V

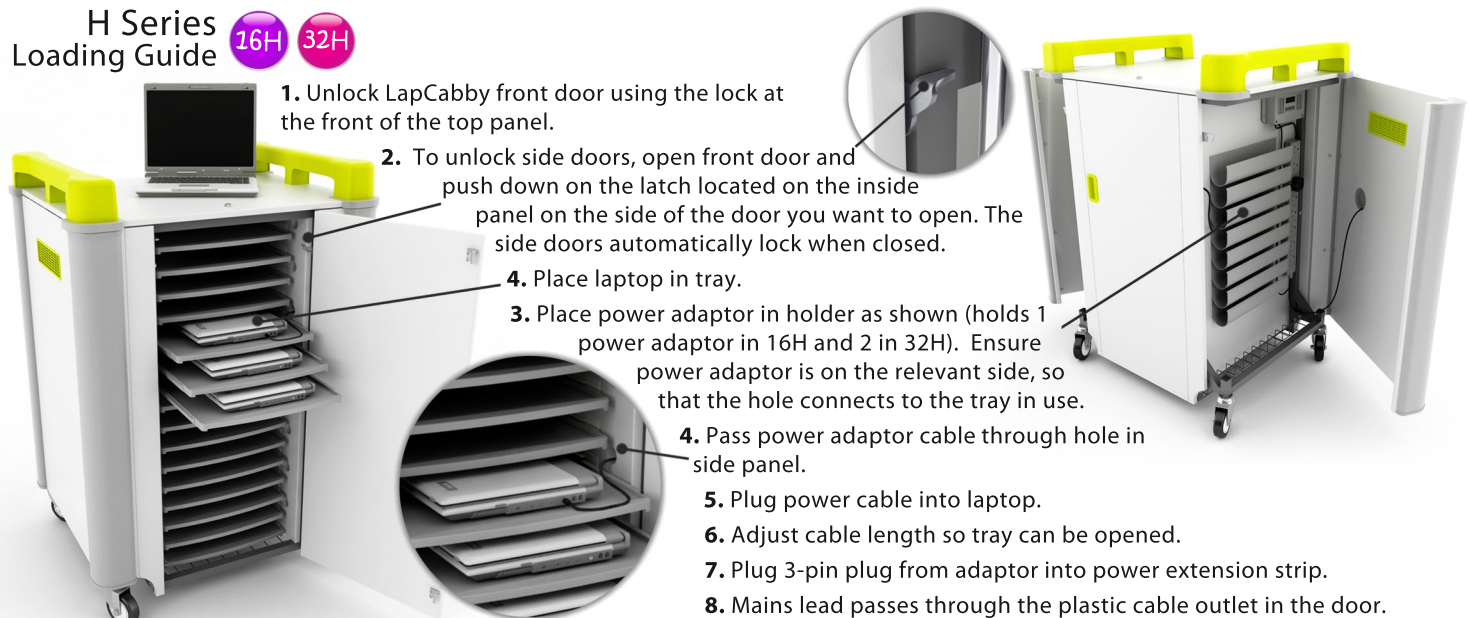


1. Unlock LapCabby front doors using the lock at the front on the top panel.
2. To unlock the back doors, open the front doors and pull the hidden handle located on the underside of the top panel. The Back doors automatically lock when closed. Ensure right hand door is closed first.
3. Place laptop between wire bars.
4. Place power adaptor in holder as shown.
5. Pass power adaptor cable through hole on back panel.
6. Plug power cable into laptop.
7. Adjust cable length so drawer can be opened.
8. Put supplied cable clips onto the cable and clip to the metal bar as shown.
9. Plug 3-pin plug from adaptor into power extension strip.
10. The mains lead passes through the plastic cable outlet in the door.

Note: 2 castors have lockable wheels. Please lock when LapCabby is in position by pushing down on the castor foot plate.

H Series Loading Guide

16H 32H



1. Unlock LapCabby front door using the lock at the front of the top panel.
2. To unlock side doors, open front door and push down on the latch located on the inside panel on the side of the door you want to open. The side doors automatically lock when closed.
3. Place laptop in tray.
4. Place power adaptor in holder as shown (holds 1 power adaptor in 16H and 2 in 32H). Ensure power adaptor is on the relevant side, so that the hole connects to the tray in use.
4. Pass power adaptor cable through hole in side panel.
5. Plug power cable into laptop.
6. Adjust cable length so tray can be opened.
7. Plug 3-pin plug from adaptor into power extension strip.
8. Mains lead passes through the plastic cable outlet in the door.

Note: 2 castors have lockable wheels. Please lock when LapCabby is in position by pushing down on the castor foot plate.

V Series Minilap Loading Guide

20V 32V 40V



1. Unlock LapCabby front door using the lock at the front of the top panel.
2. To unlock back door, open front doors and pull on the hidden handle located on the underside of the top panel on the right hand side. The back door automatically locks when closed.
3. Place laptops in holder.
4. Place power adaptors in holder as shown (2 adaptors per holder). Use supplied 'Y' splitter cable and connect to the laptops power adaptors (connects to 2 seperate laptop adaptors).
5. Pass power adaptor cables through hole on back panel.
6. Plug power cables into laptops.
7. Adjust cable length so drawer can be opened.
8. Clip cables into the clips on the laptop holder as shown.
9. Plug 3-pin plug from adaptor into power extension strip.
10. The mains lead passes through the plastic cable outlet in the door.

Note: 2 castors have lockable wheels. Please lock when LapCabby is in position by pushing down on the castor foot plate.