

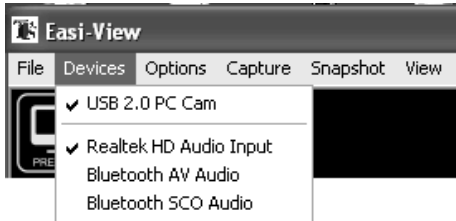


Easi-View

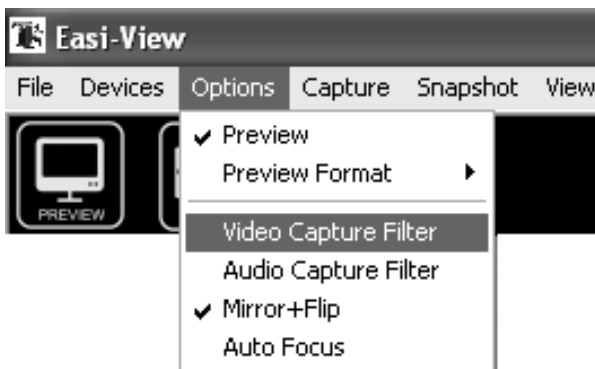
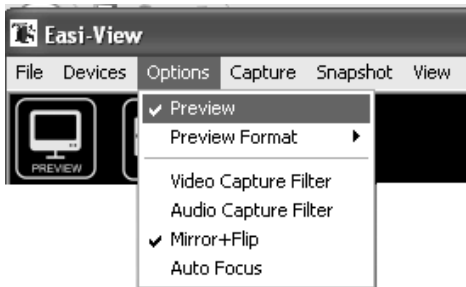


Quick Start Guide

Getting Started

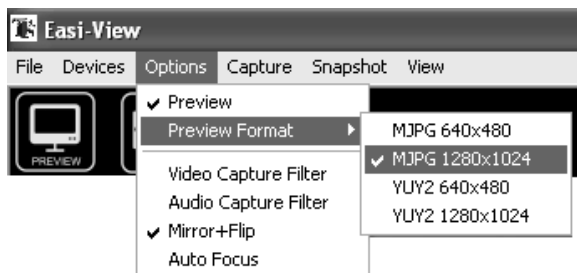


Before starting the TTS Easi-View software make sure you have plugged your Easi-View into the computer's USB port. You can launch the software by double clicking on the TTS Icon that is on your Desk top. If you have more than one video device connected to your computer, make sure you have USB 2.0 PC Cam selected and Preview is selected under the options menu



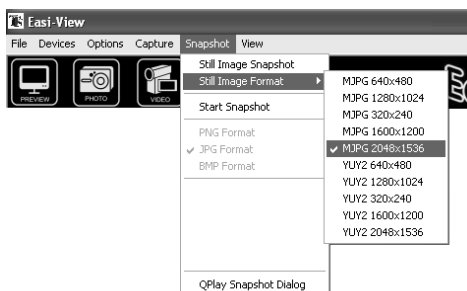
Click on Video Capture Filter, this will open up the Video properties. Make sure the Anti-Flicker setting is appropriate for your country (50 Hz in the UK, 60 Hz in the USA)

Setting the pre-view resolution



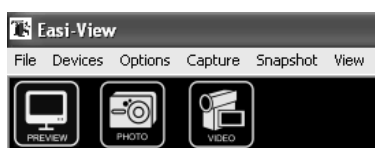
The Preview resolution can be found under the options menu. Select the highest resolution compatible with your computer monitor or projector. Selecting a resolution greater than your monitor will mean that you will not be able to view the entire image

Setting the still picture resolution

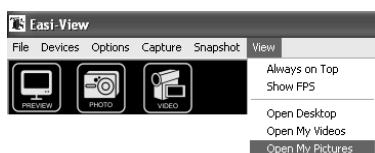


Select “Still image Format” and select the image resolution you require when taking a still image. Note that at higher resolutions it can take several seconds to bring up the still photo window.

Taking a picture



To take a picture, simply click on the camera Icon, or alternatively press the button on the EasiView base.



To view you photos, select “open my pictures”.

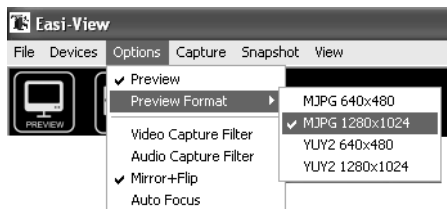
Taking a Video



To make a video simply click on the video camera Icon. Video will be recorded until you click on the video camera icon once more.

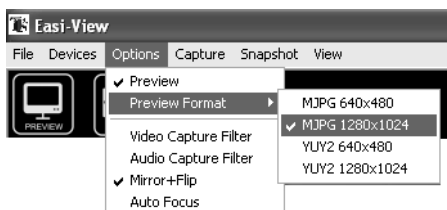
To view your videos click on “open My Videos”

Re-setting the auto-focus



If the image is not sharp and clear, or if the camera autofocus does not settle, but “hunts” continuously, click on “auto focus” to force the camera to re-focus.

Mirror+Flip



When using the Easi-View with as a visualiser, the image may be displayed upside down. Click on Mirror+Flip to rotate the image through 180 degrees